

The Etobicoke Civic Centre

Where the Alders Grow

The name Etobicoke originates with the Mississauga First Nation, who called the Etobicoke Creek and surrounding area 'Adobigok', meaning 'where the alders grow'. In imagining a new civic heart for Etobicoke, we drew our inspiration from the deep and recent history of the city and the region - from the great indigenous forests of Ontario, and traditions of building of The First Nations and the early settlers, to the post-war modernist vision of the municipality.

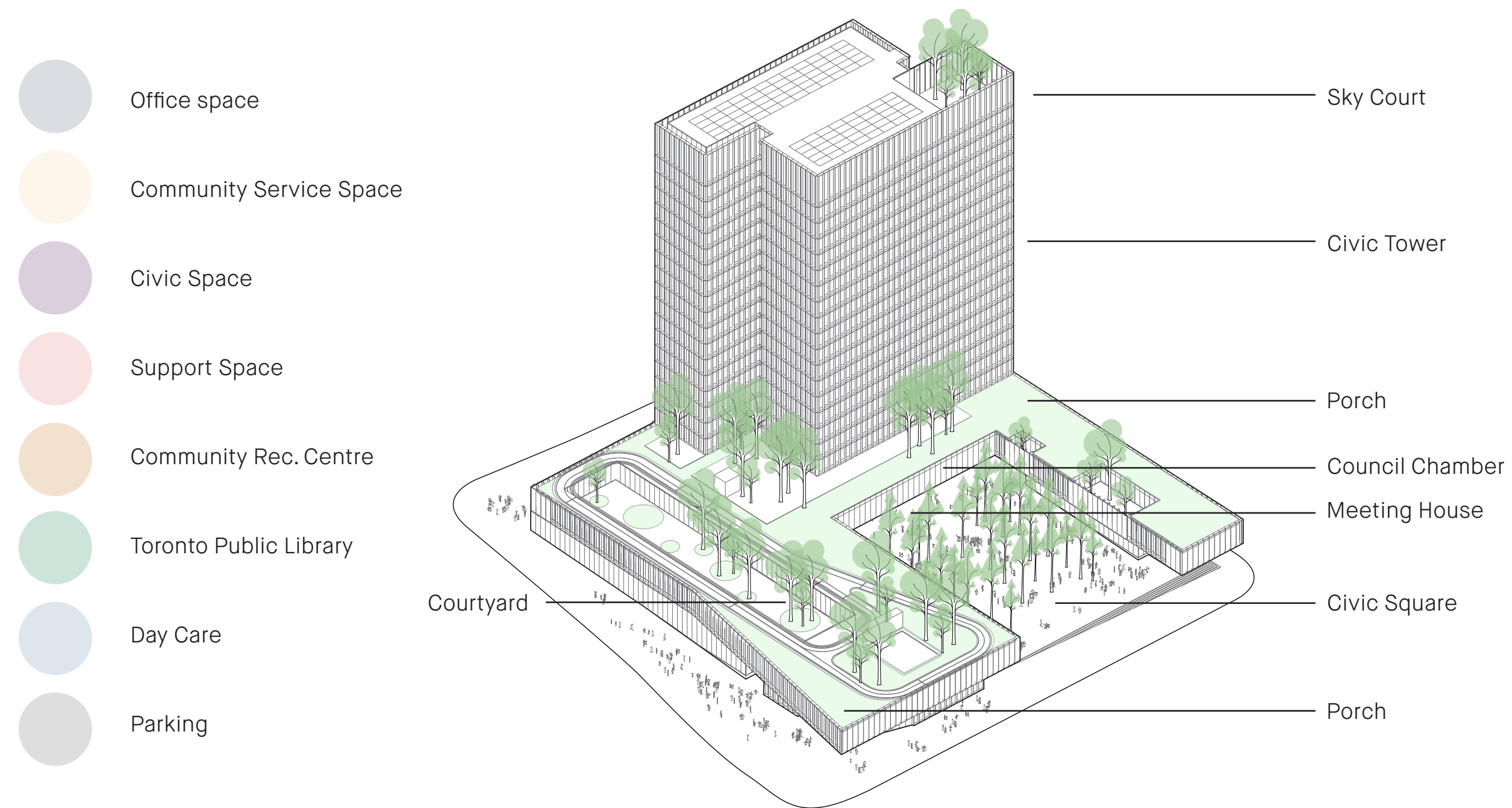
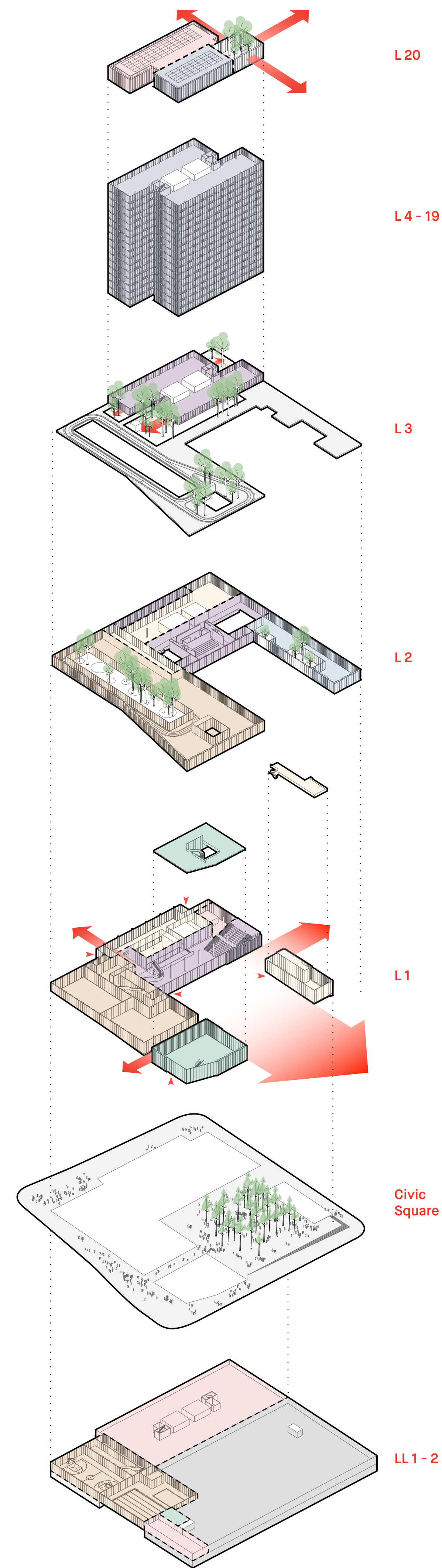
The design harmonizes architecture, landscape, sustainability and infrastructure to create an integrated civic hub. It embodies optimism and confidence in the public realm as the space of mutual accommodation where all are welcome. Every space - inside and out, and on every level - expresses the values of democracy through qualities of transparency, connectivity, universal accessibility, and bold sustainability. In its massing, siting, and expression the design reinforces the City's vision to transform the Westwood Theatre Lands and the "spaghetti junction" into a vibrant, pedestrian-friendly, urban mixed-used civic centre.

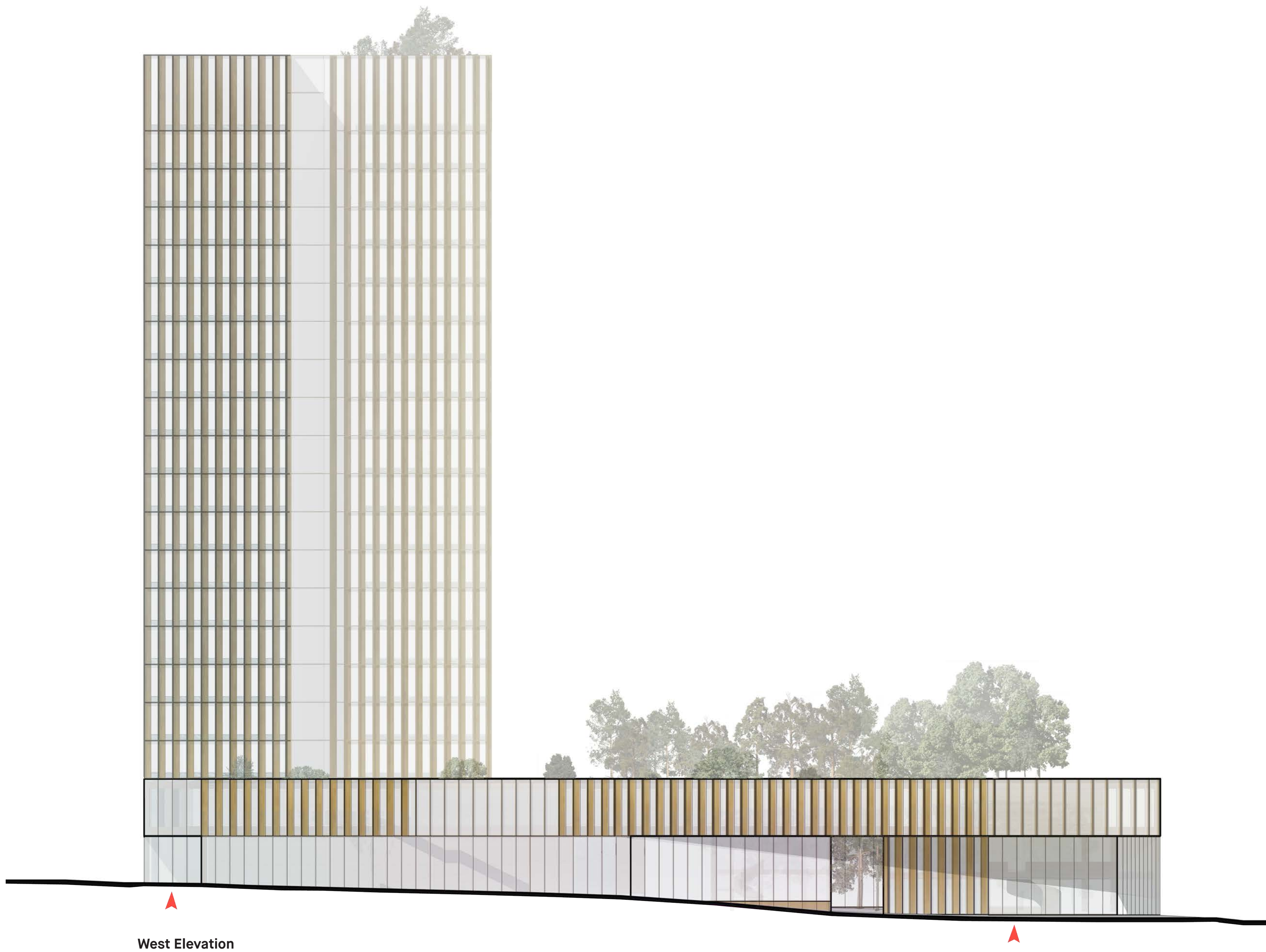
The new ECC is planned as a civic landscape rather than a singular building. It is composed of three primary formal elements: Porch, Civic Square (the Civic Living Room), Office Tower.

The Porch is a two storey podium with a wood soffit which houses the most public components of the program. It is open to the south, and frames the Civic Living Room. The Recreation Centre, and future Library are sited on Kipling within the Porch. The west wing features an outdoor running track on the roof and a sunken court set into the Recreation Centre. A café restaurant is located under the east wing and features a terrace facing west so that it receives the last rays of sunlight. The Daycare Centre is located on the second floor, with access to a series of outdoor, enclosed playgrounds. The Library can be built now or at a later stage under the roof of the West Porch in the southwest corner of the site.

The Civic Living Room is the central square with the clearing for gatherings under the council chamber and Meeting House at the north end of the square. It is fully integrated with a landscape concept that evokes the pre-settlement Ontario landscape: a forest of Jack Pines. The tall trunks of the pines allow for transparency at all times and maximize the usability of the ground plan of the square while providing smaller places and shade.

The Office Tower is a sustainable flexible concrete loft, with two wings sliding past each other. The Meeting House and public counter for municipal services are located under the tower. There is transparency from Bloor to Dundas through these spaces, and through the Civic Living Room and in expression evokes a post-Miesian quality in the use of projecting mullions in light bronze and glass.





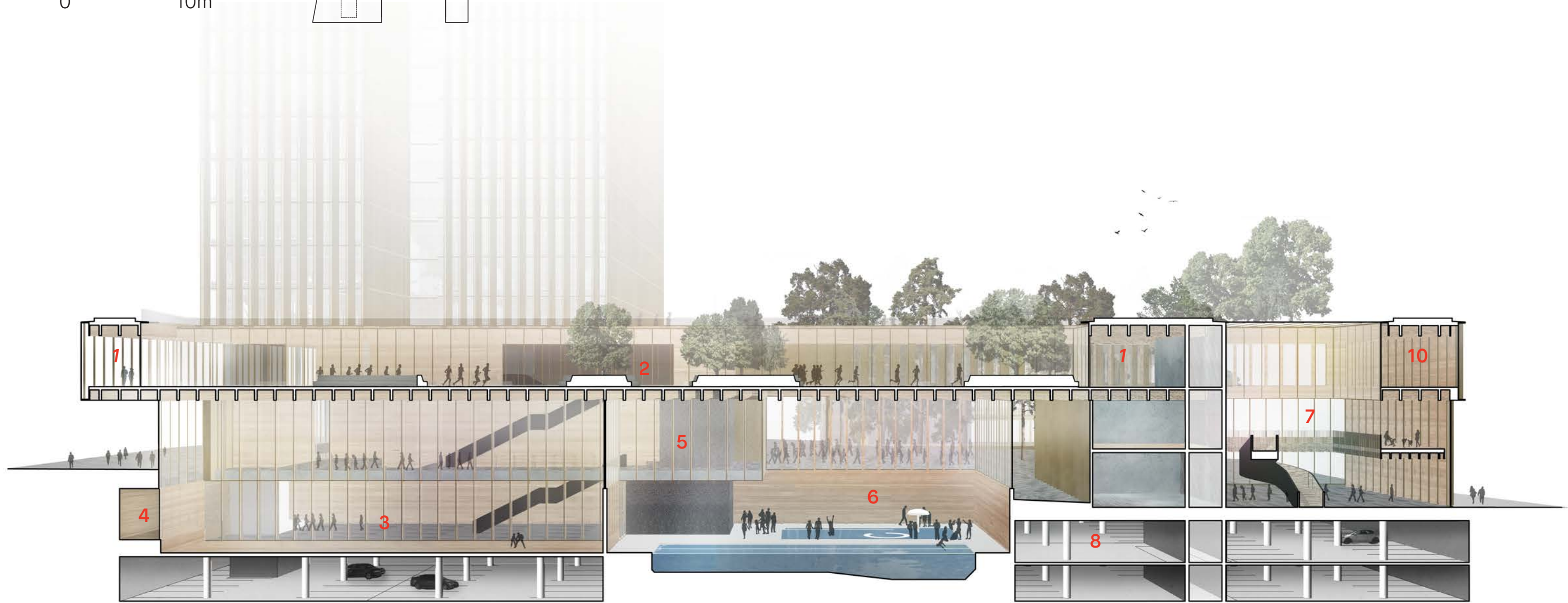
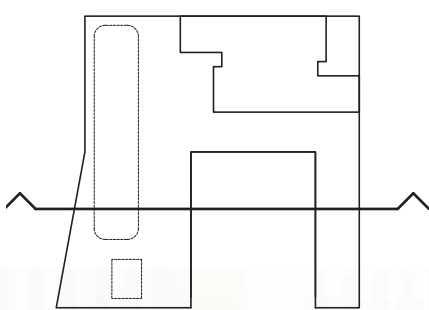
West Elevation



South Elevation

Section A - A

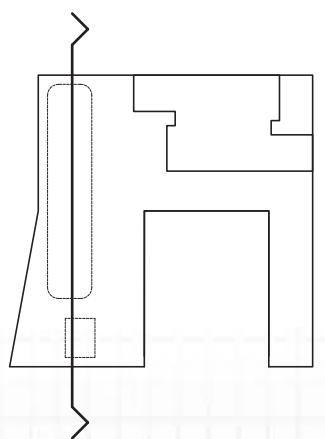
1:300
0 10m

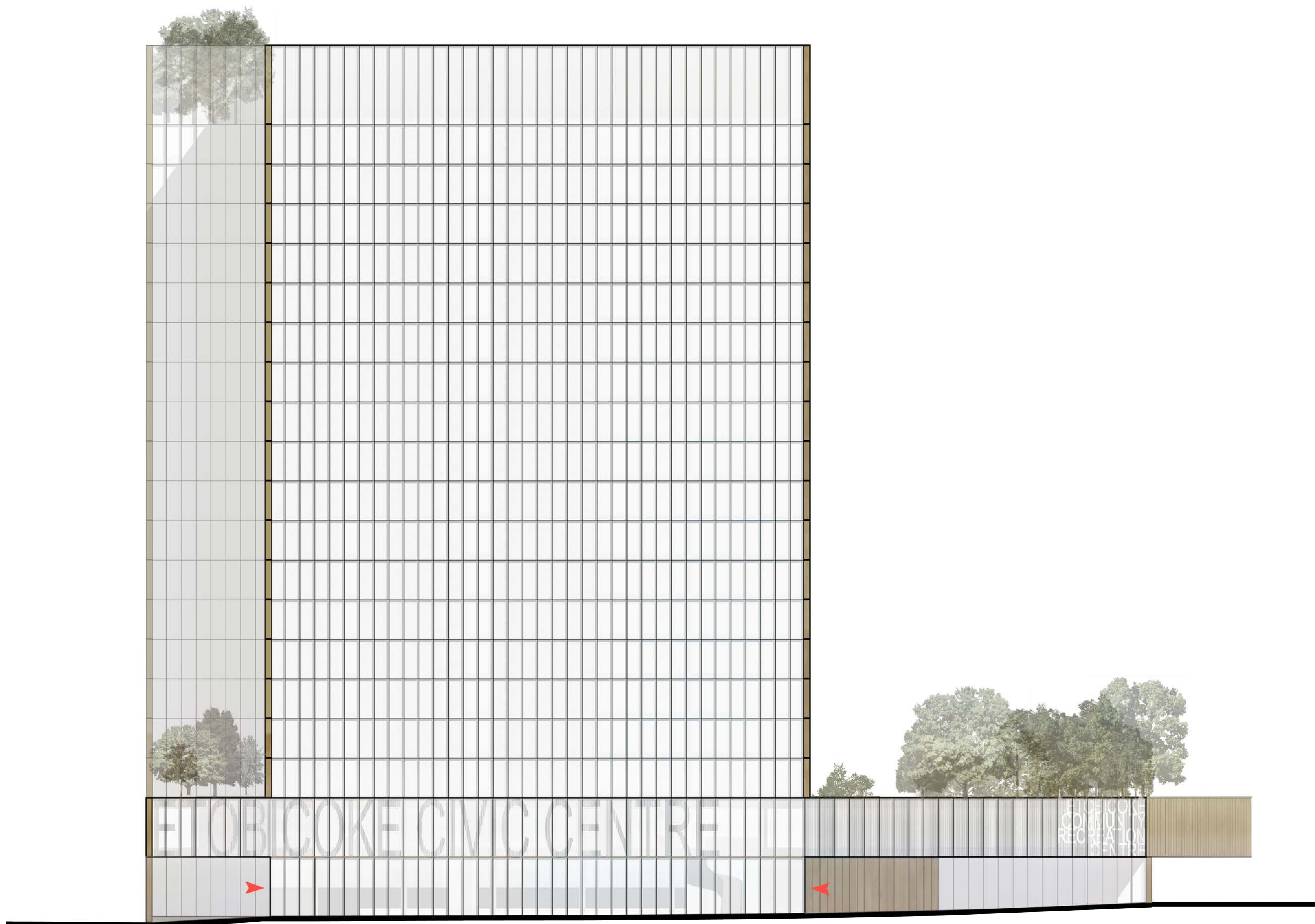


- | | | |
|-------------------|---------------------|--------------------|
| 1 Running track | 7 Library | 13 Council Chamber |
| 2 Lower Sky Court | 8 Parking | 14 Restaurant |
| 3 Gymnasium | 9 Multipurpose Room | |
| 4 Stage | 10 Fitness Centre | |
| 5 Viewing Gallery | 11 Civic Square | |
| 6 Pools | 12 Daycare | |

Section B - B

1:300
0 10m





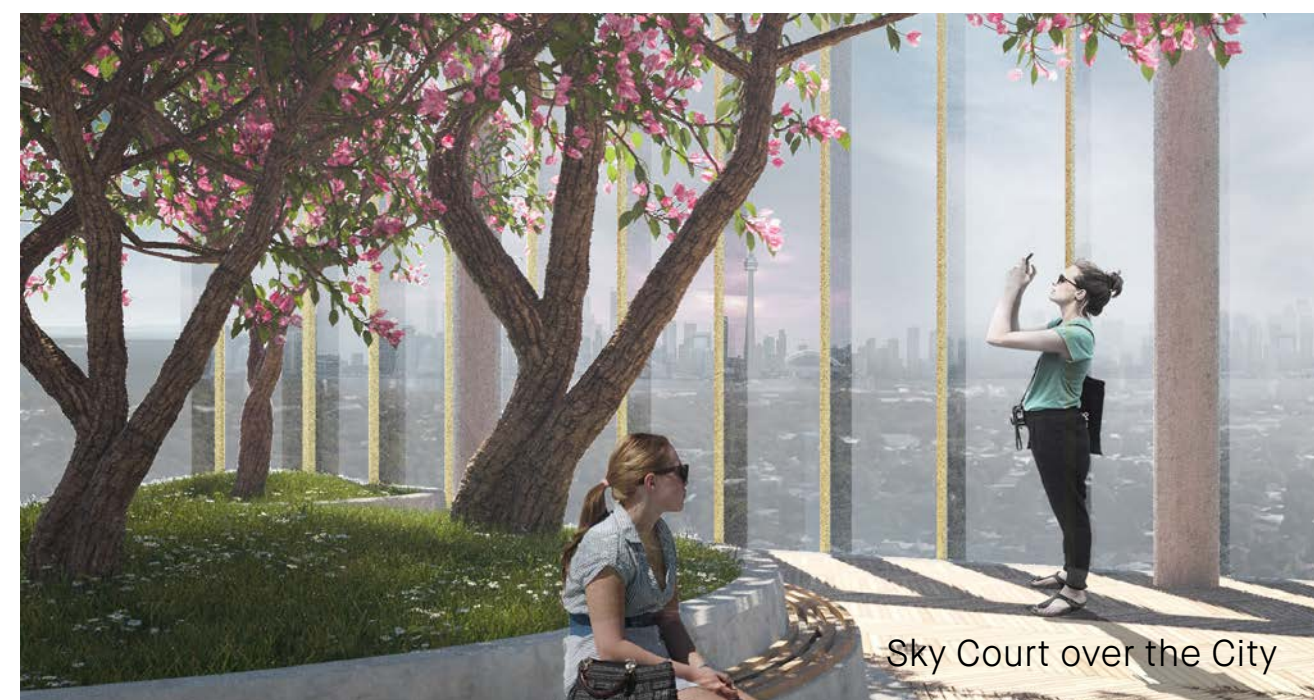
North Elevation



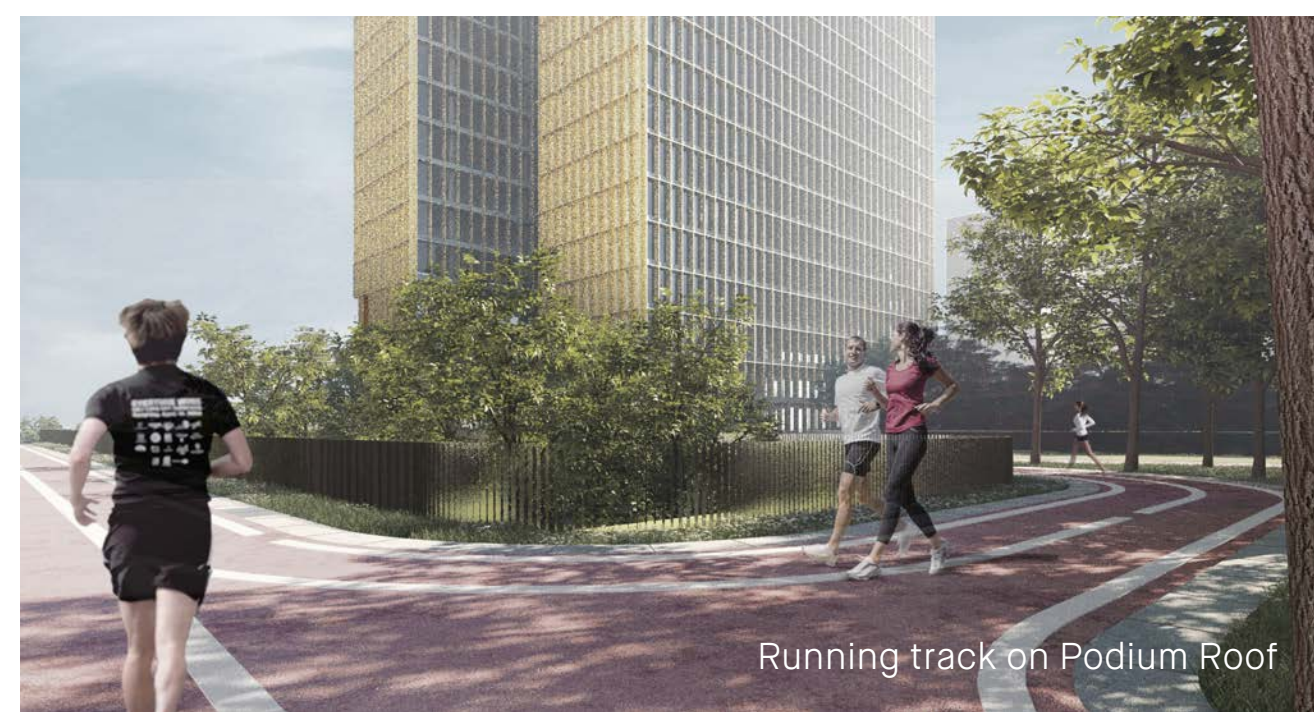
East Elevation



Bloor Street and Road B Entrance to ECG



Sky Court over the City



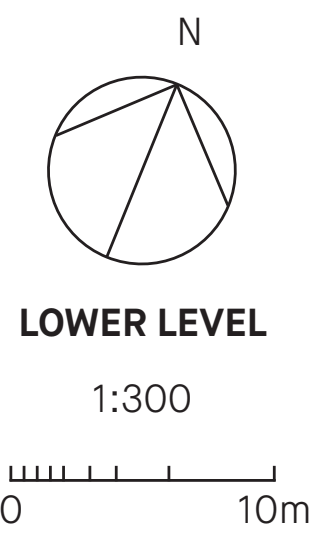
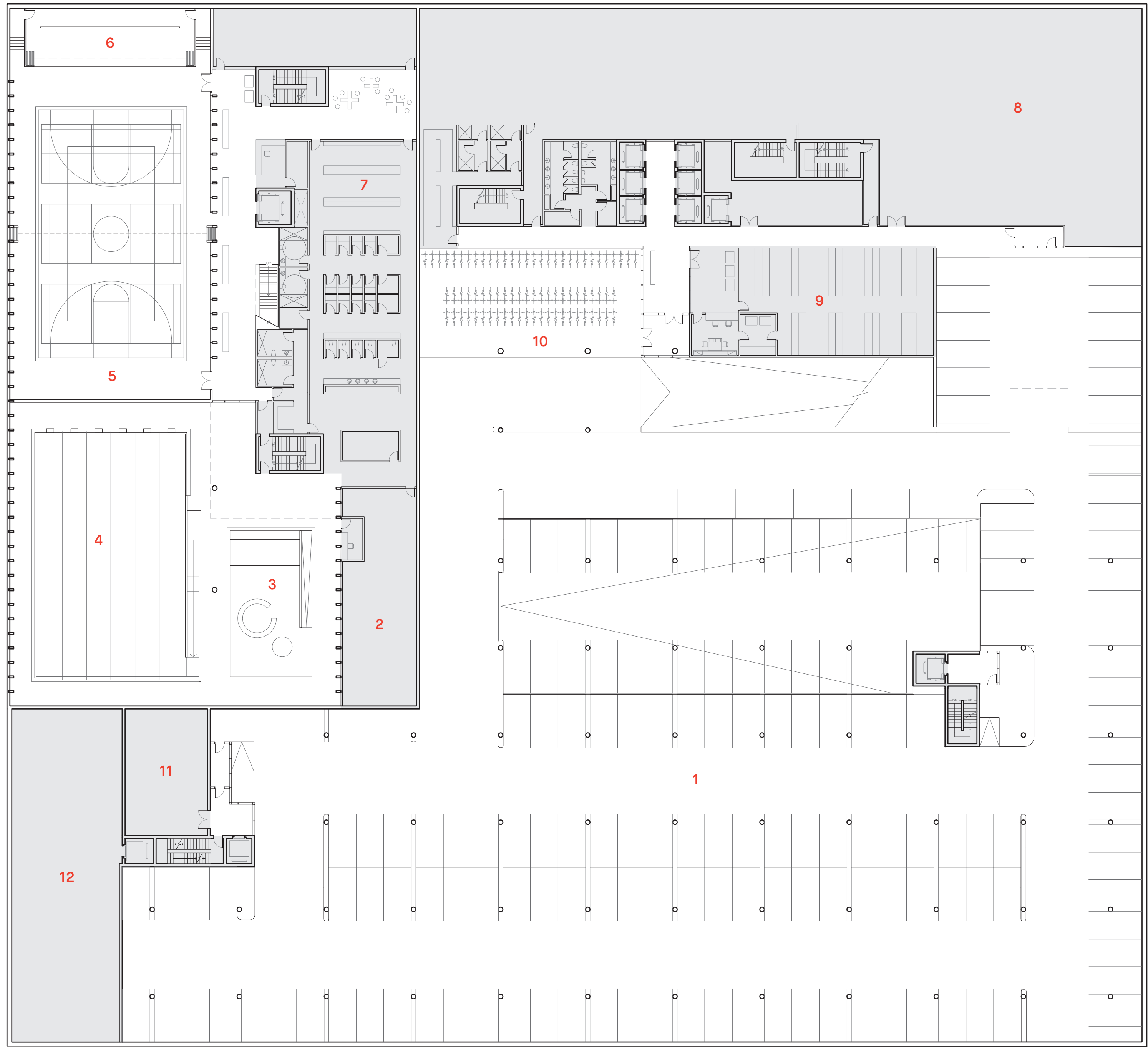
Running track on Podium Roof



Second Floor Courtyard used as a Quiet Break-Out Space



Casual Seating on Podium Roofscape



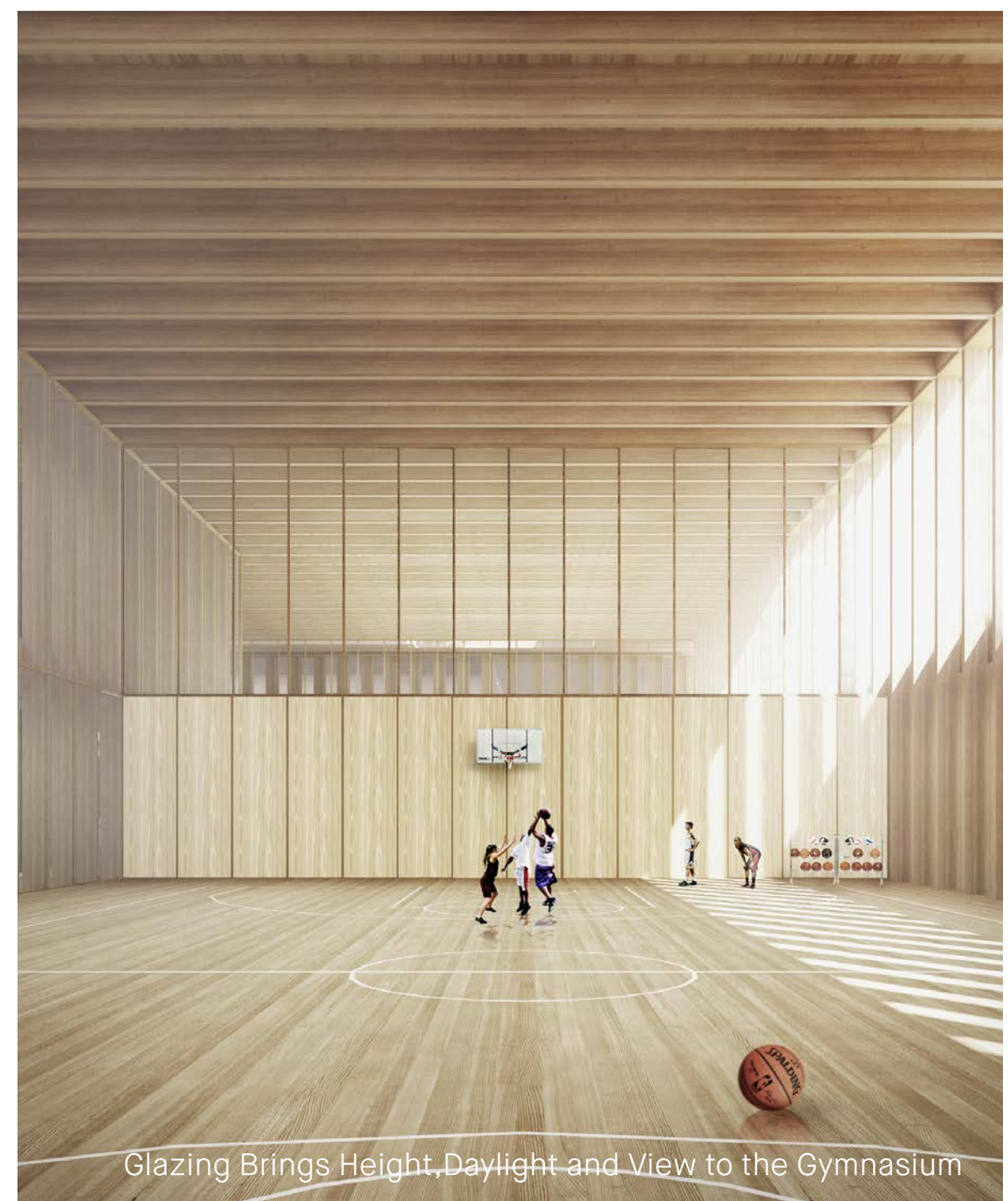
- 1 Parking
- 2 Pool Equipment and Storage
- 3 Leisure Pool
- 4 Teaching Pool
- 5 Double Gymnasium
- 6 Stage
- 7 Change Rooms
- 8 Storage
- 9 Print and Copy Room
- 10 Bicycle Lock-up
- 11 Civic Square Storage
- 12 Library Mechanical and Storage



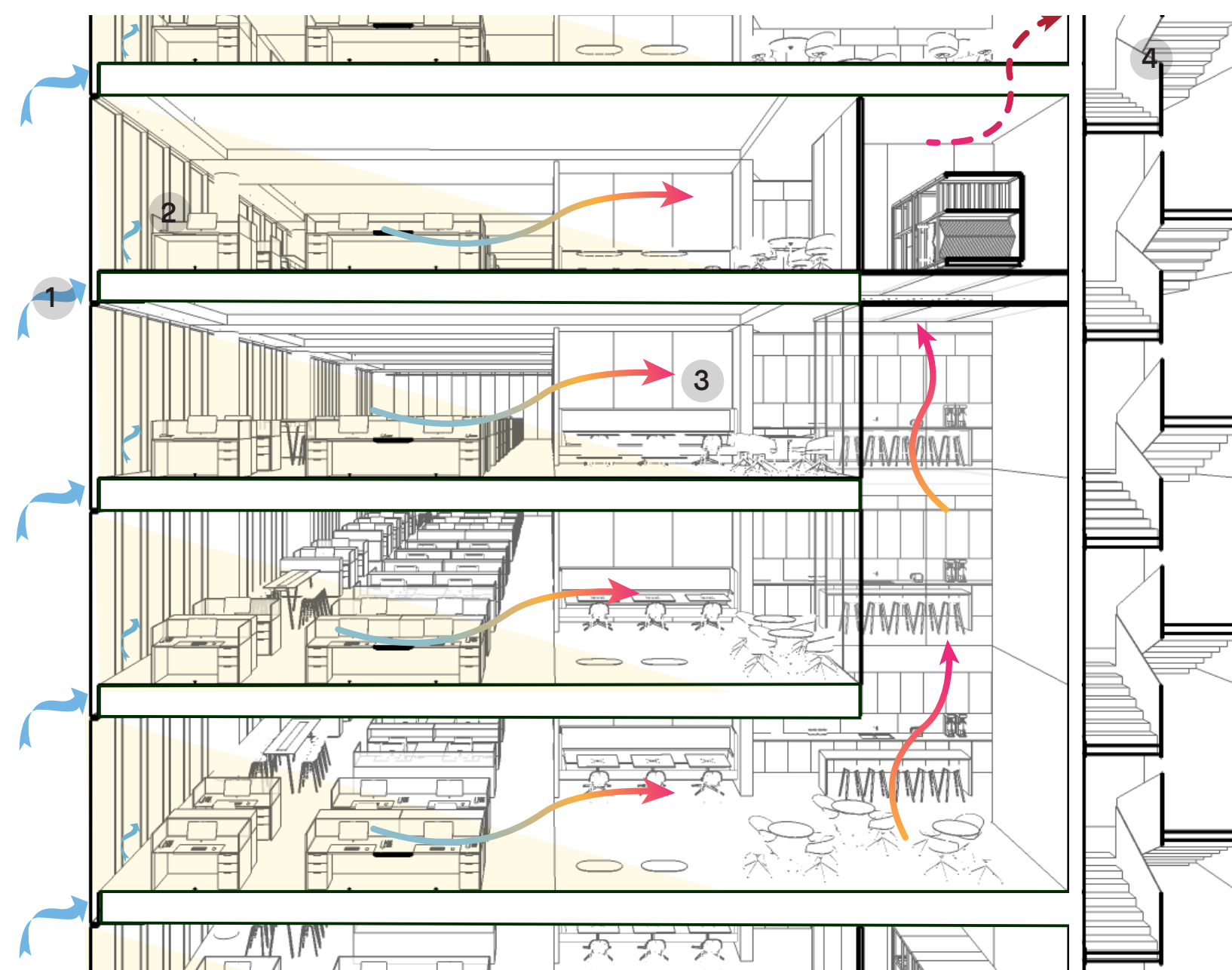
View from Bloor and Kipling of Entrance to Recreation Centre and Community Service Spaces



Generously Scaled Indoor Pedestrian Path Connects Bloor Street to Civic Living Room



Glazing Brings Height, Daylight and View to the Gymnasium

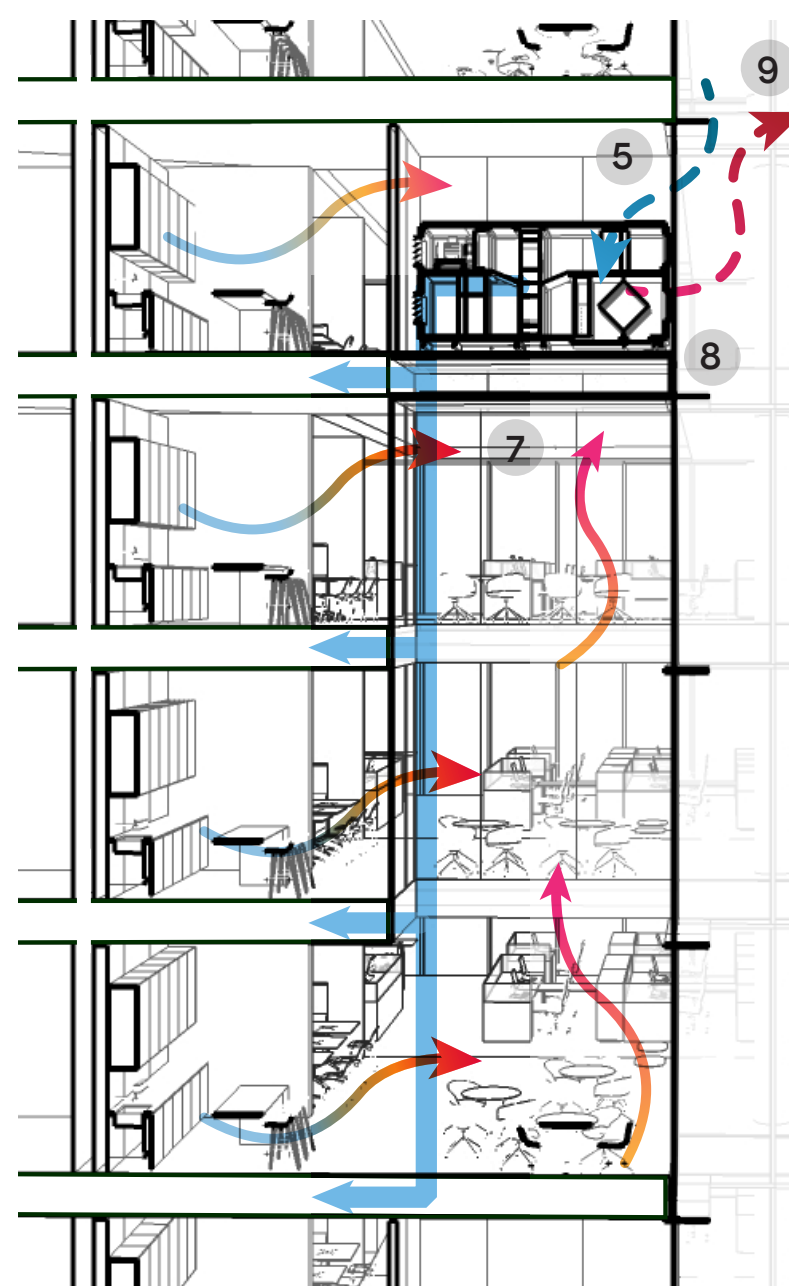


Natural Ventilation Mode

- 1 Outdoor air goes in from operable flap at the slab edge
- 2 Once inside the building, the air rises from floor grilles into the office spaces
- 3 Air travels to the multi-storey atrium
- 4 Air is exhausted to the exterior with smoke exhaust fans

Mechanical Ventilation Mode

- 5 Outdoor air is supplied to pressure floor plenum, providing distribution to spaces
- 6 Air rises from floor grilles into the office spaces (not shown)
- 7 Air travels to the multi-storey atrium
- 8 Heat recovery reduces energy demand of conditioning ventilation air
- 9 Air is exhausted to the exterior with AHU fans



Sustainability Approach

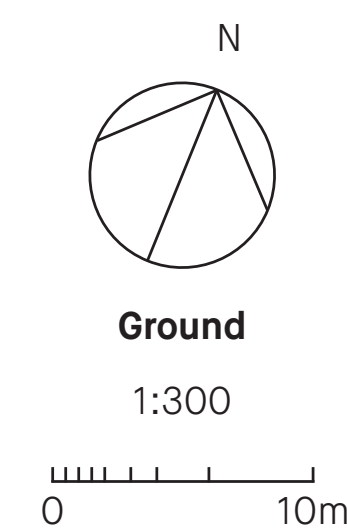
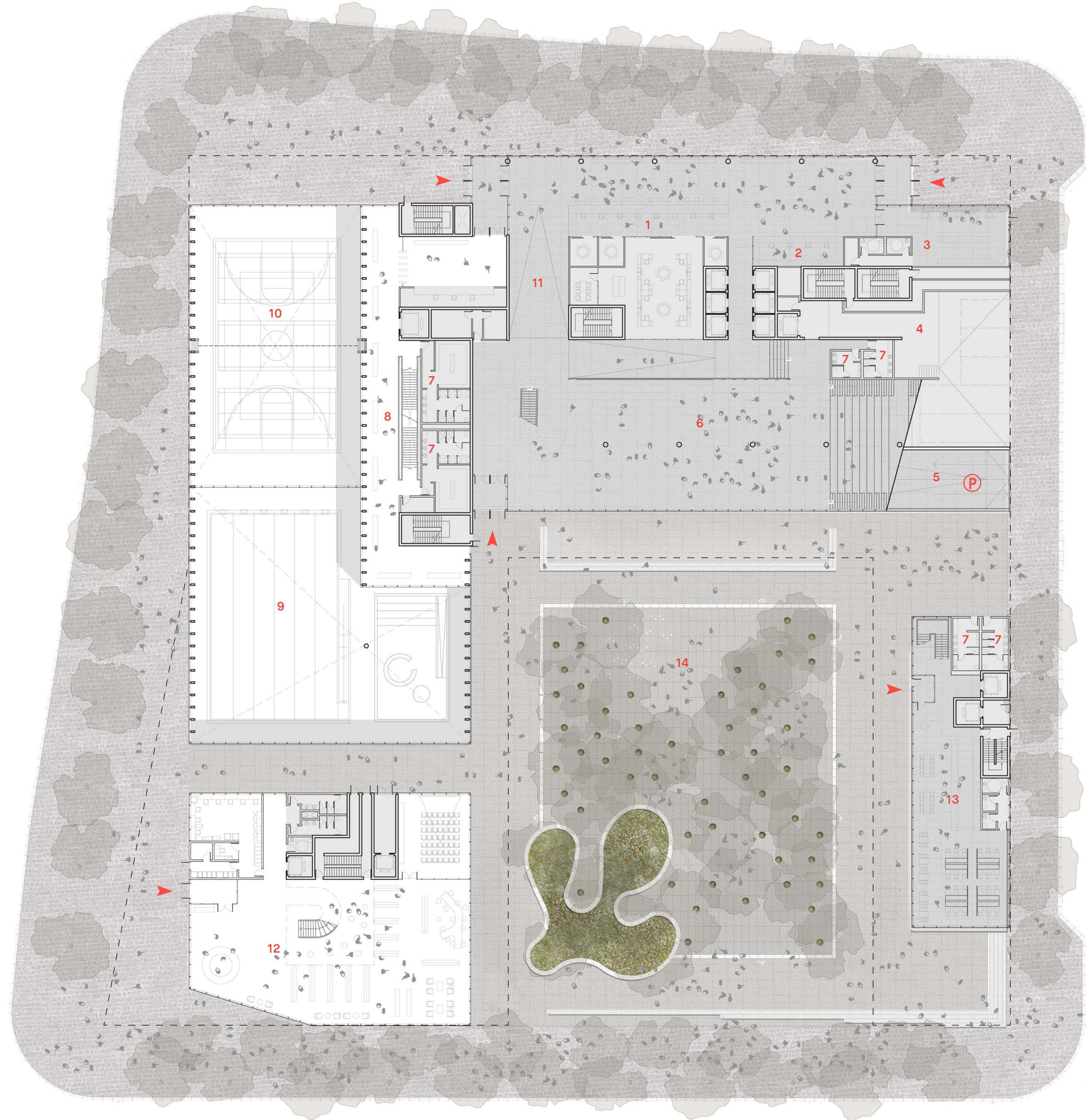
The design embodies a whole building solution that is planned to establish the ECC as an exemplar, simultaneously advancing net-zero energy targets while prioritizing the health and well-being of the citizens and the workforce of Etobicoke. At the heart of the design is the drive to maximize daylight and natural ventilation in every space of the ECC.

These aspirations have been placed at the core of the architectural expression, in massing, orientation, plan order, indoor and outdoor environmental conditions, and building technologies.

The design is set to achieve as close to net zero as possible and integrates an aggressive energy-efficient strategy to reinforce the vision of the ECC to lead the way to a healthy, net-zero community and to establish the ECC as one of the top five energy-efficient high-rise buildings in Canada.



Glazing of the Upper Volume of the Pool Connects Recreational Activities to the Life of the Civic Square



- 1 Counter Services
- 2 Triage / Greeting Desk
- 3 Coffee Bar
- 4 Loading and Receiving
- 5 Entrance to Parking
- 6 Meeting House
- 7 Public Washrooms
- 8 Viewing Corridor
- 9 Pool Below
- 10 Gymnasium Below
- 11 Gallery
- 12 Public Library
- 13 Restaurant
- 14 Civic Square



Summer - On Market Day the Meeting House is an Extension of the Civic Living Room



Summer Evening - The Civic Living Room Supports Different Scales of Events



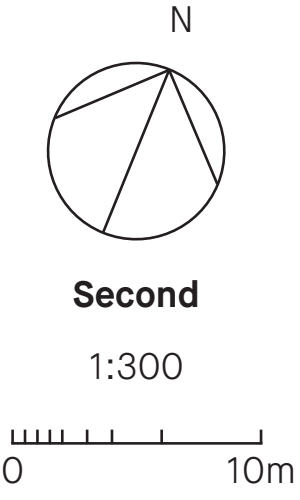
Typical Day 50 Stall Farmers Market 800 Person Event 800 Person Movie Screening 250 Person Seated Movie Screening



Civic Square View Looking North to the Meeting House



Tall Pine Canopy over the Civic Square



- 1 Pre-Function Space
- 2 Council Chamber
- 3 Members Lounge
- 4 Private Workroom
- 5 Council Elevator
- 6 50-Person Multipurpose Room
- 7 100-Person Multipurpose Room
- 8 200-Person Multipurpose Room
- 9 Fitness Centre
- 10 Storage
- 11 Indoor Running Track
- 12 Second Floor Courtyard
- 13 Employment and Social Service Centre
- 14 Breastfeeding Clinic
- 15 Dental Clinic
- 16 Prayer Room
- 17 Daycare Reception
- 18 Infant Playroom
- 19 Playground
- 20 Preschool Playground
- 21 Preschool Playroom
- 22 Gross Motor Space



Winter - Community Service Space Facing Bloor Street



Water Feature in the Civic Square



Casual Seating in the Civic Square looking onto Dundas



Playground in the Daycare Looking onto the Civic Square



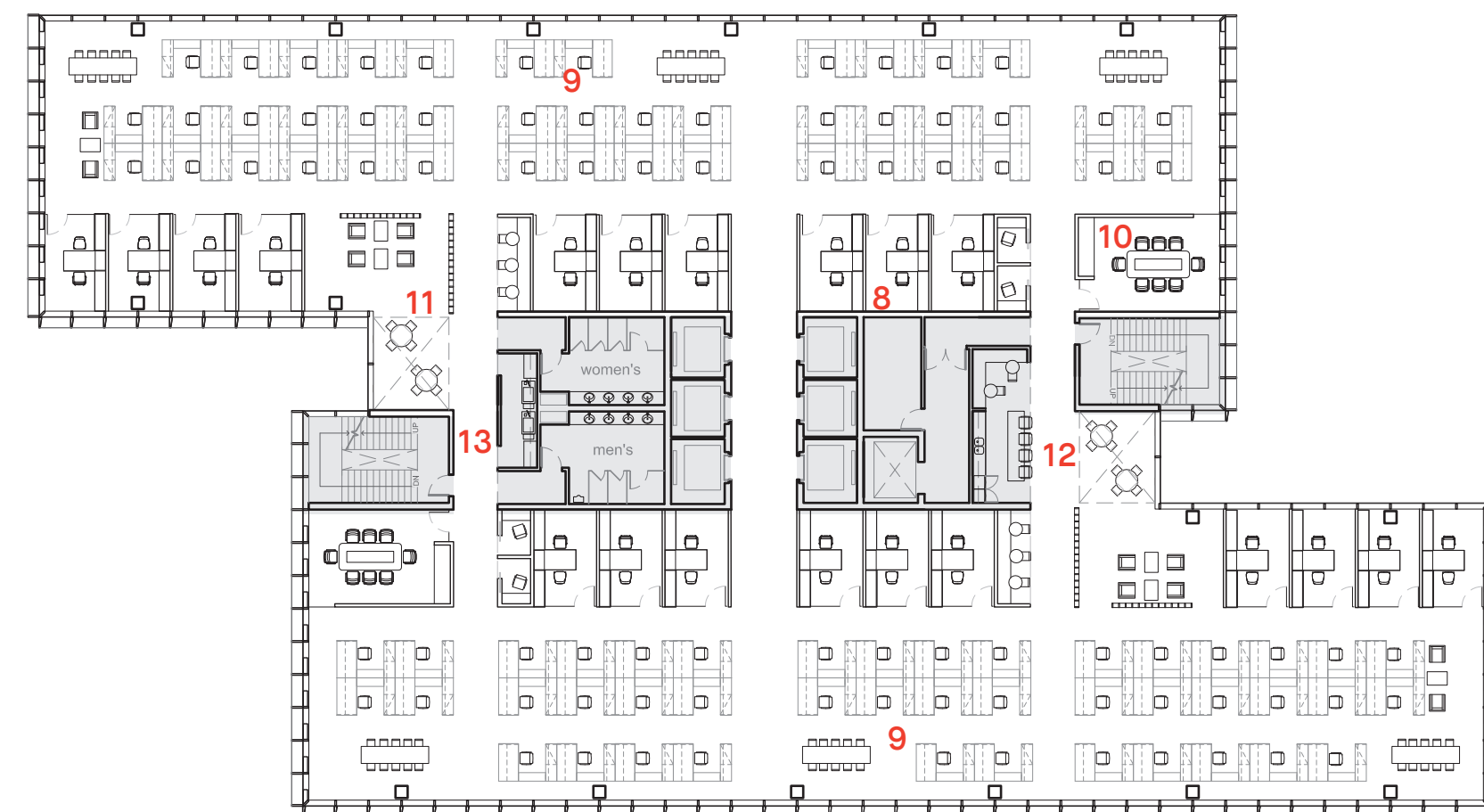
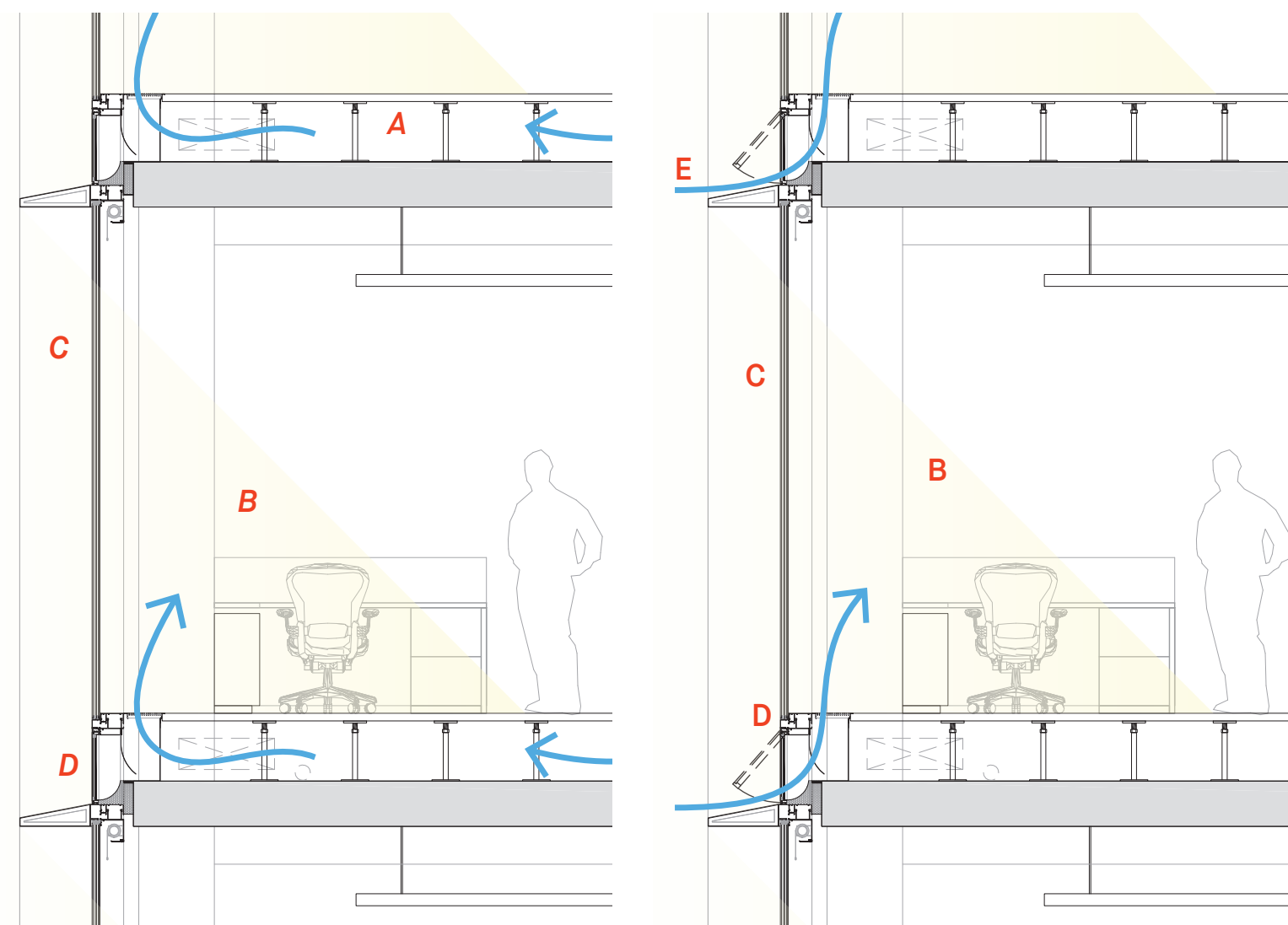
Council Chamber Overlooking the Civic Square



- 1 Reception/Waiting
- 2 Meeting Room
- 3 Councilor Office
- 4 Kitchen
- 5 Future Expansion
- 6 Multipurpose Room
- 7 Roof Terrace



The Porch opens up to the Southeast Connection to the Future Park



- 8 Office
- 9 Open Work Station
- 10 Meeting Room
- 11 Collaboration Space
- 12 Kitchen
- 13 Copy

- A Supply air from East and West atrium
- B Daylight penetration
- C Triple-glazed high-performance curtain wall system
- D Vent above horizontal blades and movable siding on the East, West, and South.
- E Outdoor air is supplied to a pressurized floor plenum, which is distributed to office space



A Collaborative and Flexible Work Place inside the Civic Tower